

► Our technology. Your success.

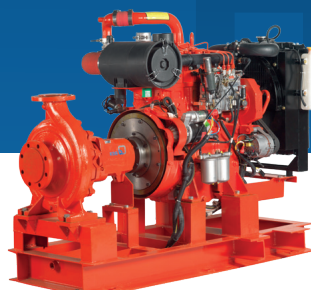
Pumps ■ Valves ■ Service



Product Profile

Building Services

www.ksbindia.co.in



KSB - A one stop Technology Shop

A comprehensive range of KSB pumps are manufactured from the facilities of KSB Limited spread over six centres in India... each facility dedicated to a product line. In-house design and manufacture of jigs, fixtures and dies under strict tolerances, ensure that the highest levels of quality are maintained. An ISO 9001, ISO14001 & OHSAS 18001 organisation, KSB in India has systematised concurrent production of dissimilar components. All components, each with different specifications, flow through the computer-controlled manufacturing process.

A systematised solution by KSB involves more than merely designing and building the right pump to meet the exact demands of a variety of customers.

All the pumps and valves are offered to the market through a very wide distribution network comprising of 4 zonal offices, 16 branch offices, over 800 authorised dealers, 4 service stations, over 200 authorised service centres and 22 godowns... All this to ensure, that for every KSB pump and valve in use, there is a KSB sales and service outlet around the corner.

KSB not only engineers state-of-the-art pump and valve technology but also strives to provide an air-tight array of service around pumps and valves. KSB stands by its customers all along, through the entire implementation of a project, offers continuous after-sales service and undertakes a variety of service contracts and energy audits to provide optimum and cost effective solutions.

At KSB, the relation with the customer is an ongoing partnership, continuing beyond product commissioning. Regular tailor-made training sessions are held, in-house and at the customers' sites, to acquaint them with selection, operation and maintenance to get the best from KSB pumps and valves.

All this has been made possible by the commitment and dedication of the collective strength of about 2000 strong team who firmly believe that rewards come through the success of a client's project.



Product Range for Building Services



Fully automatic pressure boosting units available in three variants - Kt, Vt & VPt with 2 to 6 vertical high-pressure pumps and fully electronic control of the required supply pressure with standard volt-free contacts for fault indication and status

Suitable for residential & commercial buildings, hospitals, hotels, departmental stores, airports, metro stations, convention centre, sport complex etc.

| | | |
|----------------|---|-------------------|
| Capacity | Q | up to 800 m³/ hr. |
| Head | H | up to 250 m |
| Disc. Pressure | P | 40 bar |
| Temperature | t | up to 140° C |



The moviBoost Dual system is a pressure booster pump set with two identical horizontal multistage pumps connected in parallel to support the variable flow requirement.

The system consists of 2 nos. KHM pumps including all necessary accessories & piping mounted on common base plate, water tank (optional), pressure sensors and control panel.

| | | |
|----------------|---|------------------|
| Capacity | Q | up to 14 m³/ hr. |
| Head | H | up to 54 m |
| Disc. Pressure | P | 10 bar |
| Temperature | t | up to 70° C |



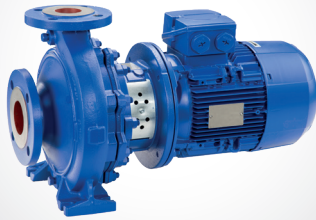
Fully automatic CL system suitable for driving up to 6 pumps with or without bypass starter. Control panel comprising separate VFDs & controller.

Suitable for handling Primary & secondary pumping in HVAC, warm water/ hot water circulation, cooling water circulation.

| | | |
|-------------|---|--------------------|
| Capacity | Q | up to 3000 m³/ hr. |
| Head | H | up to 100 m |
| Temperature | t | -30 to 140°C |

Product Range for Building Services

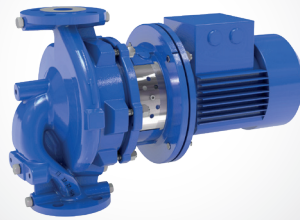
Etabloc



Compact, horizontal, end suction, centrifugal, radially split volute casing pumps in monobloc construction. Suitable for general water supply, sprinkling, irrigation, booster plants, circulation of warm, hot and cooling water, delivery of condensate and boiler-feed water and fire fighting applications.

| | |
|------------------|------------------|
| Pump Size | 25 to 150 mm |
| Capacity | up to 640 m³/hr. |
| Head | up to 160 m |
| Discharge press. | up to 16 bar |
| Temperature | -30 to 140°C |
| Speed up to | 2900 rpm |

Etaline



Centrifugal, radially split in-line pumps in monobloc construction. Can be mounted horizontally or vertically. Flanges are drilled to ASME or EN standard. Suction and delivery sizes are common and hence no need of expander. Suitable for fire fighting, air conditioning, industrial recirculation, HVAC systems etc.

| | |
|------------------|-------------------|
| Pump Size | 32 to 200 mm |
| Capacity | up to 700 m³ /hr. |
| Head | up to 95 m |
| Discharge press. | up to 16 bar |
| Temperature | -30 to 140° C |
| Speed | up to 2900 rpm |

Etanorm



Horizontal, end suction, centrifugal, radially split volute casing pumps in back-pull-out design fitted with single stage radial impeller.

Suitable for general water supply, sprinkling, irrigation, booster plants, circulation of warm, hot and cooling water, delivery of condensate and boiler-feed water and fire fighting applications.

| | | |
|------------------|----|------------------|
| Pump Size | DN | 25 to 150 mm |
| Capacity | Q | up to 660 m³/hr. |
| Head | H | up to 160 m |
| Discharge press. | P | up to 16 bar |
| Temperature | t | -30 to 140°C |
| Speed | n | up to 2900 rpm |

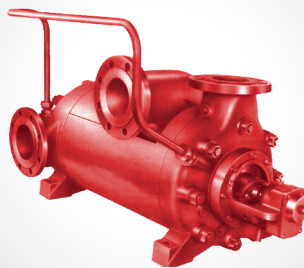
Movitec B



Multi-stage, vertical inline high-pressure centrifugal pumps in ring-section design. Suitable for general water supply, sprinkling, irrigation and pressure boosting systems, warm water, hot water and cooling water re-circulation, boiler feed systems, domestic water supply systems and washing plants. Available in three variants : VS, VF & VCF

| | |
|-------------|--------------------------------------|
| Pump Size | 2, 4, 6, 10, 15, 25, 40, 60, 90, 125 |
| Capacity | up to 100 m³/hr. |
| Head | up to 228 mtrs. |
| Pressure | 25 bar |
| Temperature | -20 to 140°C |
| Speed up to | 3600 rpm |

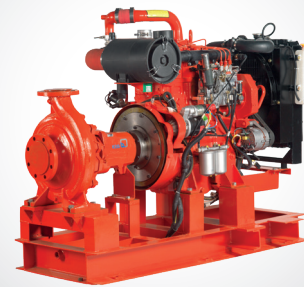
WK/WKS



Horizontal, radially split, high pressure, multistage pumps with multi outlet construction. Suitable for fire fighting.

| | |
|------------------|------------------|
| Pump Size | 40 to 150 mm |
| Capacity | up to 210 m³/hr. |
| Head | up to 400 m |
| Discharge press. | up to 40 bar |
| Temperature | -30 to 140° C |
| Speed | up to 2900 rpm |

Fire Fighting System



Complete range of fire pumpsets which includes Hydrant, sprinkler, (motor as well as engine driven) jockey pumps, curtain pumps and terrace booster as per local regulations and customer specifications.

Package includes - Pump, base frame, coupling, coupling guard, electric motor, diesel engine, jockey pump along with accessories like control cabinet, fuel tank, batteries, switches etc.

| | |
|------------------|------------------|
| Capacity | up to 700 m³/hr. |
| Head | up to 250 m |
| Discharge press. | up to 40 bar |
| Temperature | up to 140° C |
| Speed | up to 2900 rpm |



| | | | |
|--|----|----------------|--|
| Ama-Drainer 300 Series | | | |
| Vertical fully floodable submersible motor with In built swing check valve. Jacket cooled single phase motor with integrated temperature switch. Float switch for automatic operation. Suitable for lowering surface water level, transfer of water, agricultural pits, & sprinklers in gardens, drainage of cellars / basin | | | |
| Pump Size | DN | 32 mm | |
| Capacity | Q | up to 13 m³/hr | |
| Head | H | up to 12 m | |
| Motor | | in 1Ø 2.2 kW | |
| Temperature | t | up to 40°C | |



| | | | |
|--|----|-----------------|--|
| Single stage, submersible centrifugal pumps of closed coupled (monobloc) construction. | | | |
| Amarex IN pumps are suitable for handling waste water transport, storm water transport, waste water treatment etc. | | | |
| KRTU pumps are suitable for handling municipal and industrial waste water. 3 types of impellers available to suit a variety of needs. | | | |
| Pump Size | DN | 50, 65, 100 mm | |
| Capacity | Q | up to 190 m³/hr | |
| Head | H | up to 49 mtrs. | |
| Temperature | t | up to 70°C | |
| Motor power | P | up to 9.5 kW | |
| Speed | n | up to 2900 rpm | |



| | | | |
|--|----|--|--|
| Vertical, monobloc pumpset, free flow impeller of two sizes, 1Ø and 3Ø motors with IP 68 protection, 1Ø motor with built-in thermal overload protection and float switch, bi-directional mechanical seal | | | |
| Suitable for pumping surface water, rain water, waste water containing solids, drainage of sumps liable to flood, agricultural pits and canals. | | | |
| Pump Size | DN | 50 mm | |
| Capacity | Q | up to 29 m³/hr | |
| Head | H | up to 16 m | |
| Motor power | P | up to 1.1 kW (1Ø) up to 1.5 kW (3Ø) | |
| Temperature | t | up to 40° C | |



| | |
|--|--|
| Submersible pump in multi-stage construction with radial or mixed flow impellers coupled with oil or water filled, single or three phase submersible motors. | |
| Suitable for horticulture, irrigation, housing, building services and farm houses, ornamental fountains etc. | |

| | | |
|---------------|---|-----------------|
| Well diameter | D | min. 75 mm |
| Capacity | Q | up to 800 m³/hr |
| Head | H | up to 400 m |
| Motor power | P | up to 110 kW |
| Temperature | t | Ambient |
| Speed | n | 2900 rpm |



| | |
|---|--|
| 3 Phase Centrifugal pumps in Monobloc design with rigid cast iron body. | |
| Available in 7 models ranging from 3 Hp to 10 Hp for agricultural applications. These models are available with 2 pole motor. | |

| | | |
|--------------|----|---------------------|
| Pump size | DN | 65 x 50 to 100 x 75 |
| Capacity | Q | up to 1633 lpm |
| Head | H | up to 50 m |
| Temperature | t | Ambient |
| Motor rating | n | 3 to 10 HP |



CONTACT INFO



A-228, Udhna Udhyog Sangh, Road No. 10,
Udhna, Surat - 394210.

T-21, Silver Plaza, Nr. Sardar Patel Complex,
G.I.D.C., Ankleshwar - 393002.



+91-72111 76202
+91-78781 46717



sales@infinitygroupindia.com
nimish@infinitygroupindia.com